

Setting up Digital Program Integration For Field Day Software

NARS FIELD DAY 2020

N3FJP LOGGING SOFTWARE DIGITAL INTEGRATIONS

FIRST STEP: START THE API...

- Regardless of which digital program you plan to use, the first step will always be to start the N3FJP Software program you want to connect to before starting the connecting program. From N3FJP Software's menu options click Settings > Application Program Interface and check the upper check box that says TCP API Enabled (Server). Leave the lower check box unchecked. The API setup form should look like this →
- If you are using the connected program to perform rig interface, from the N3FJP program menu options click Settings > Rig Interface and select None from the rig list.
- If you are using rig interface from N3FJP software, to only have N3FJP Software respond to mode updates sent from the connected program, click Settings > Rig Interface. Under the Mode By options, select Don't Use. Also, check the check box that says "Don't send mode change with frequency".
- Those are the only steps required in N3FJP Software. Everything else is handled by the connecting program. Connecting programs documented on this page include Fldigi, JT Alert and WSJT-X, as well as GridTracker.

N3FJP API 0.8

Server API - Allow any properly coded program to connect

API Server Functionality - Use this section to enable other programs, including other N3FJP Software programs, to connect to this one.

I often receive requests from folks who would like to interface their digital or logging programs with my logging software. To accommodate those requests, I have added easily implemented Application Program Interface (API) functionality, to enable any other program to do just that!

If you have a program that you would like to see interfaced with my software, please contact the developer(s) and refer them to this page:
<http://www.n3fjp.com/help/api.html>

Unless you let the programmer(s) know that you would like to see them

[Please click here for the detailed API specifications.](#)

TCP API Enabled (Server) Port

Server Running = True
Port = 1100

Client - Only use this to connect to another N3FJP program

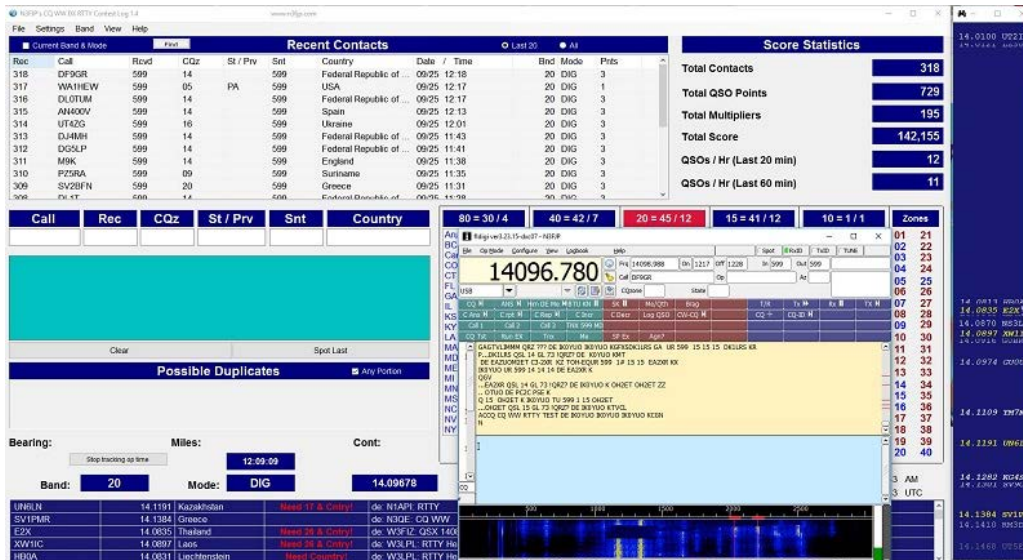
API Client Functionality - Use this section to enable this program to connect to another N3FJP Software program (usually Amateur Contact Log) to see if the entity you are working is confirmed.

Before enabling this feature, from the host program's menu options (usually Amateur Contact Log) click Settings > API and check the

Host Port

Enable Entity Confirmation Check via API

Disconnected



Download Link: <https://sourceforge.net/projects/fldigi/files/fldigi/>
 User's Guide: <https://sourceforge.net/projects/fldigi/files/fldigi/fldigi-help.pdf/download> (Interfacing with N3FJP Software begins on page 135).

Support: <https://groups.io/g/winfldigi/>

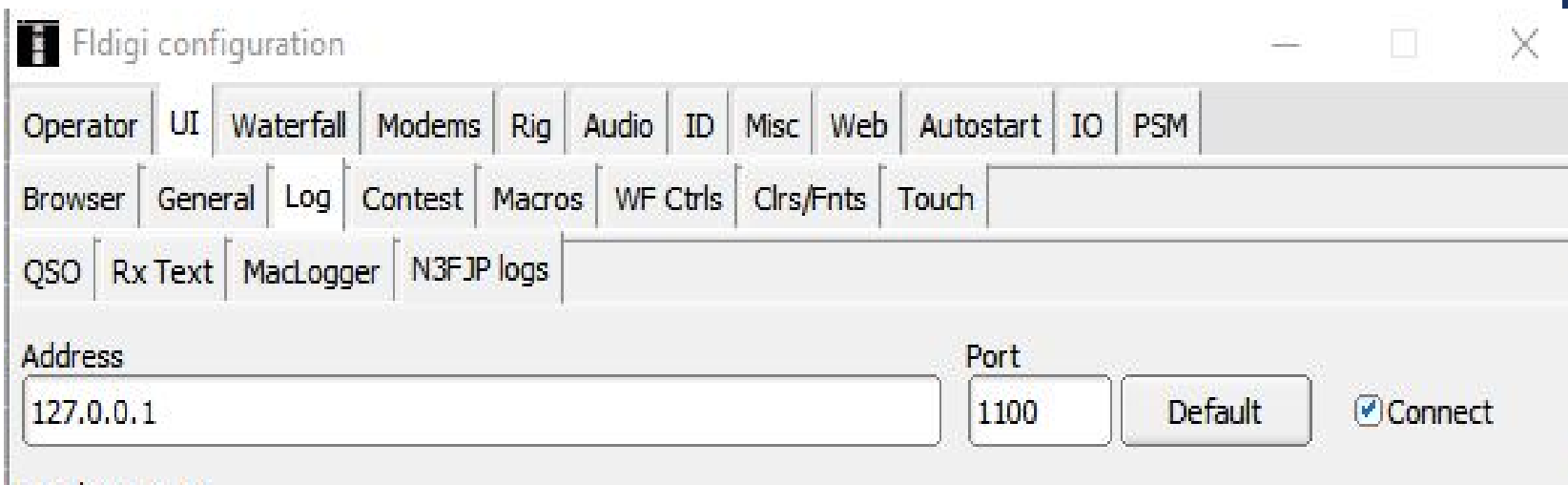
Comments: Fldigi is excellent, widely used digital software that supports many digital modes.

Note that while some applications send each field value to N3FJP as you select them from the decode window, Fldigi only sends the call in advance, so don't expect to immediately see the other exchange values in N3FJP Software. When you click Fldigi's Save button, the rest of the fields in N3FJP Software will fill and save.

Setup: (these are the very basics. Dave has LOTS more documentation in his Users Guide)

- Click Configure > N3FJP Logs
- Unless you are connecting to a different PC, just leave the defaults and click Connect as shown.
- If N3FJP Software is connected to your rig for rig control, click Configure > Rig Control and make sure the option to use Flrig is NOT checked.
- Click Configure > Contest and select the Field Day Contest

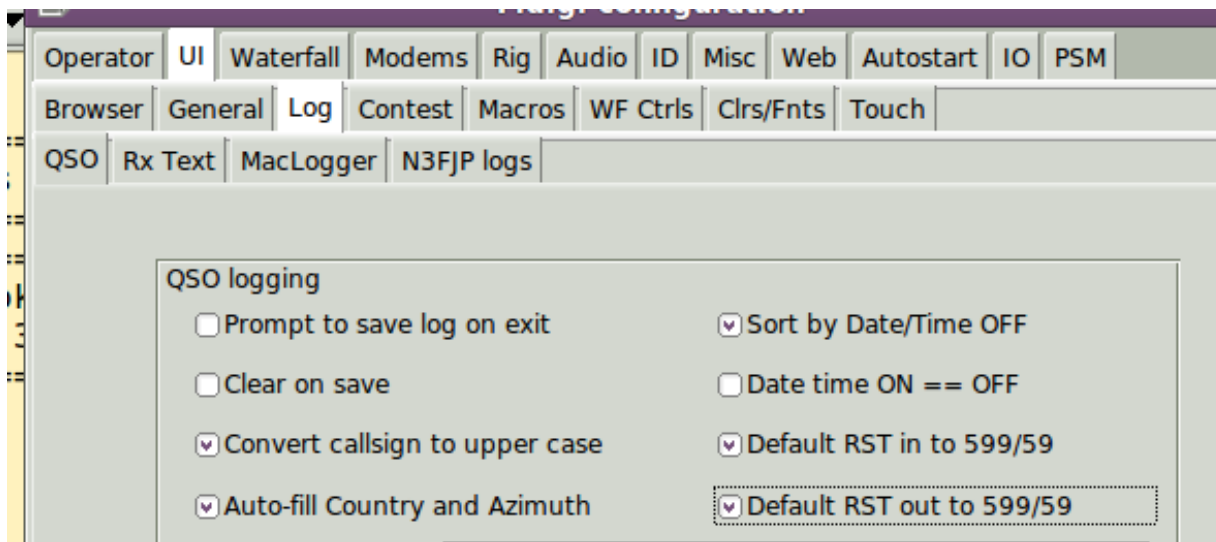
FLDIGI



- Click Configure > UI > Log > QSO and enable the RST defaults (check the box that says "RST always 599/59"). That way you won't have to take the time to capture the RST values during the QSO.
- Click Op Mode > RTTY to set up for CQ WW RTTY
- Configure macros.

To send a value from Fldigi to N3FJP Software:

- Right click the value in the decode window and then select the field. Only the Call field is sent immediately. The rest are held in Fldigi's queue and displayed in Fldigi until save is clicked.
- Clicking the Save button (button with blue down arrow) will write the values to N3FJP and save the contact.



FLDIGI

WSJT-X

Using JTAlertX as the intermediary, when you click Log QSO in WSJT-X, the QSO will immediately log right in AC Log. In this configuration, there is no need to transfer your QSOs later via ADIF!

If you haven't already, go ahead and download JTAlertX from <http://hamapps.com/> and connect it to WSJT-X. While you are there, install the database as well by downloading the database .exe file and running it. When installing JTAlertX for WSJT-X, during the install it will ask you which software you want to create JTAlerts icons for and list 6 programs. Only click the WSJT-X box (unless you have the other programs installed). Then connect JTAlertX to AC Log by following the directions detailed on the following pages.

JTAlertX

Download Link: <http://hamapps.com/>

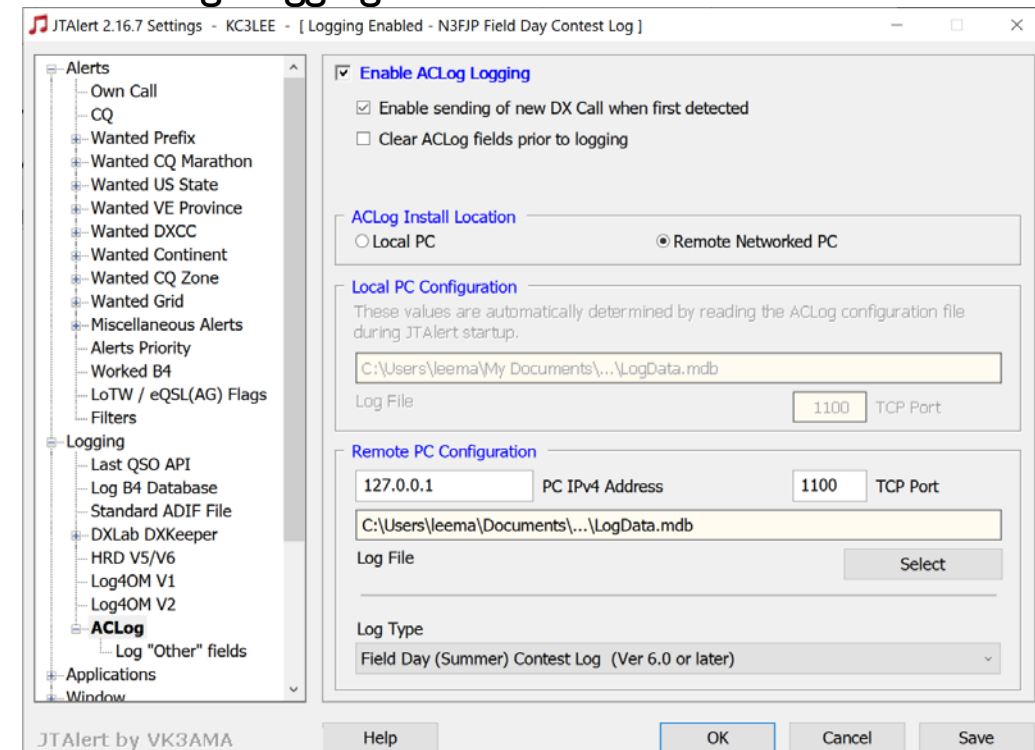
Support: <https://hamapps.groups.io/g/Support>

Comments: Digital bridge software emphasizing FT4, FT8, JT and other digital modes.

Setup:

- From the menu options in JTAlert click Settings > Scan Log and Update.
- Click the plus by Logging.
- Select AC Log.
- Click the check box for Enable AC Log Logging.

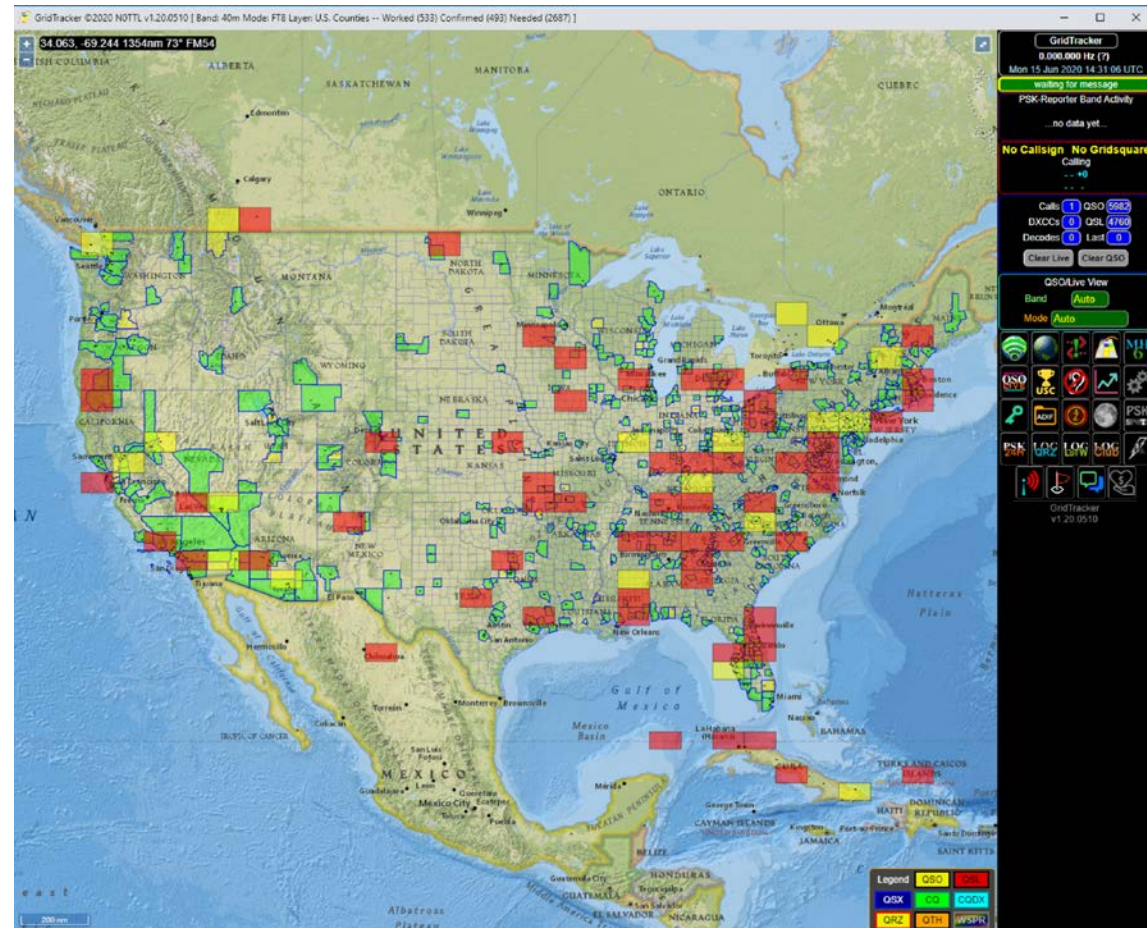
- Choose SUMMER FIELD DAY in Log Type.
- Please note that you must **log the QSO in WSJT-X** and it will be forwarded to Contest Log and the correct exchange will be logged (with WSJT-X set up for contesting and the entire, correct exchange received in WSJT-X).



GRIDTRACKER & WSJT-X & JTALERTX

A.K.A.:
THE WHOLE
SHEBANG...

GridTracker is a mapping program that integrates with all of these programs and performs many functions, including being the logging go-between as well as showing the grids/sections/states/dxcc you have contacted. It is available at <https://tagloomis.com/grid-tracker/>



GRIDTRACKER & WSJT-X & JTALERTX

A.K.A.:
THE WHOLE
SHEBANG...

Once GT is installed, click the Gear Icon for settings & set up the obvious tabs to your liking. Then choose the LOGGING tab:

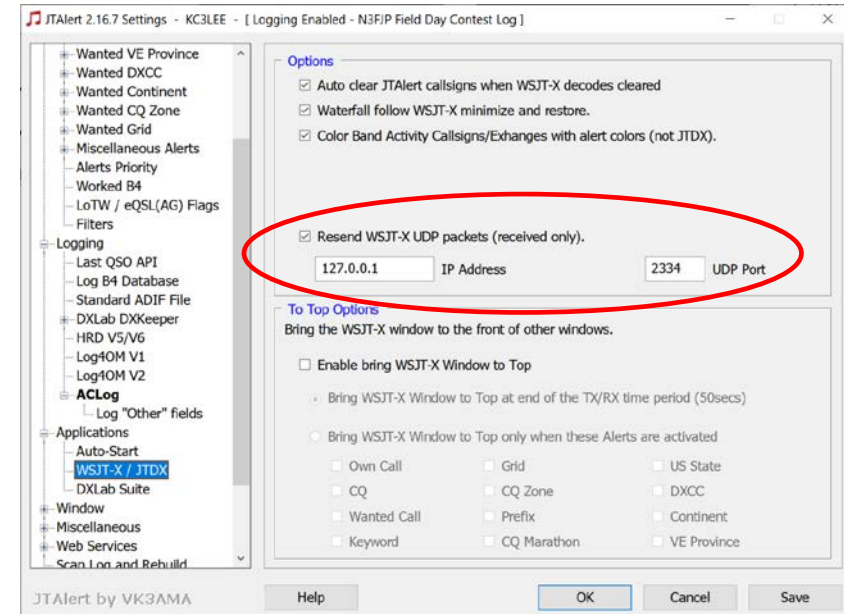
You will probably want to disable all other logging for Field Day. Make sure you choose N3FJP ALog to log to. Make sure the default port is 1100...



GRIDTRACKER & WSJT-X & JTALERTX

A.K.A.:
THE WHOLE
SHEBANG...

In JTALERTX, be sure
you have the following
settings for UDP
Forwarding set:
I use port 2334



Make sure GridTracker
has the same port set
in SETTINGS:



GRIDTRACKER
&
WSJT-X
&
JTALERTX

A.K.A.:
THE WHOLE
SHEBANG...

IMPORTANT:

If you choose to do logging using
GridTracker, you **MUST DISABLE**
logging in FTALERTX! GridTracker
takes care of it for you!



Reach out to me with
any questions you may
have & GL on FD, OM
& 73!

THANK YOU

KC3LEE@KC3LEE.COM